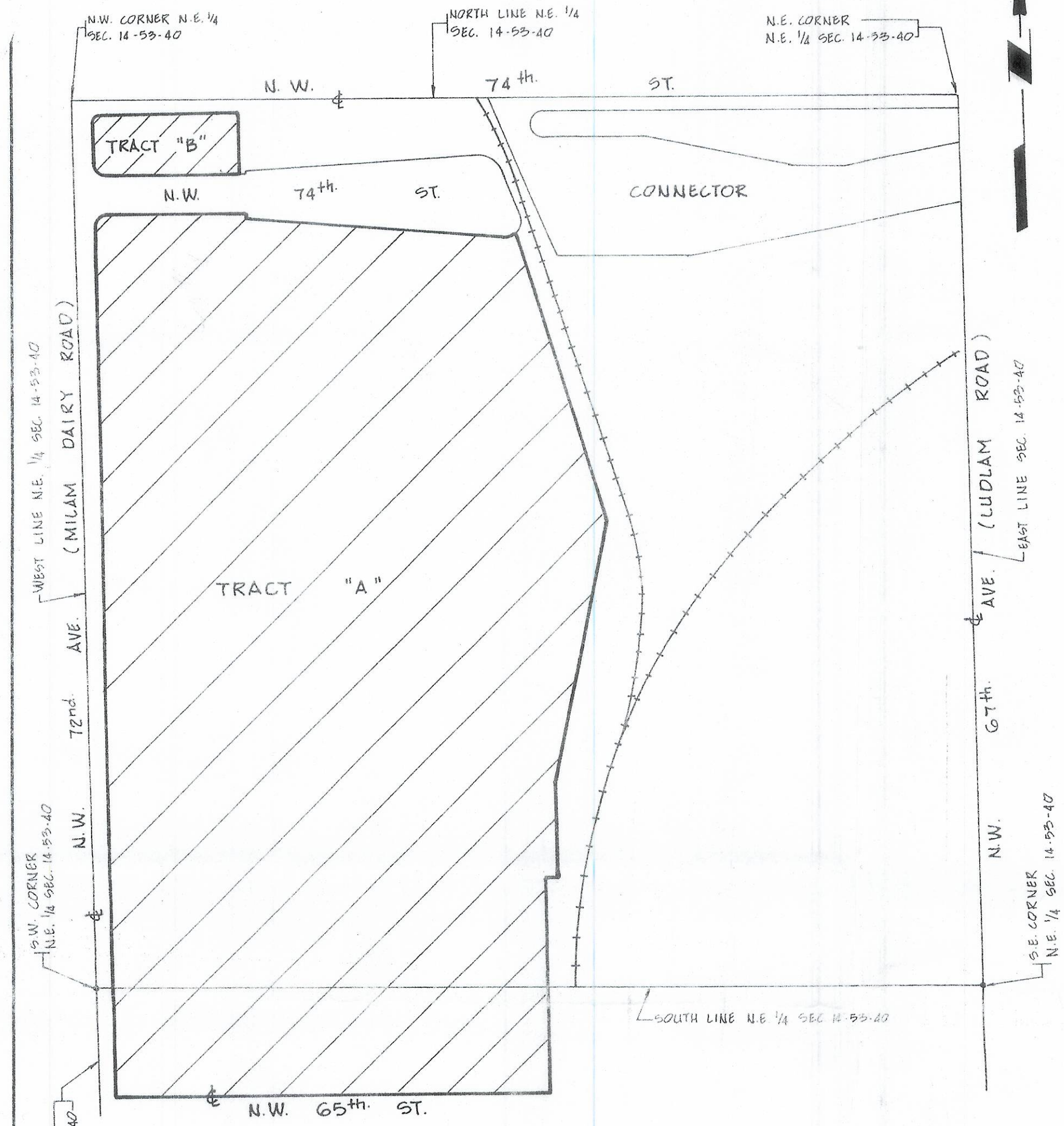
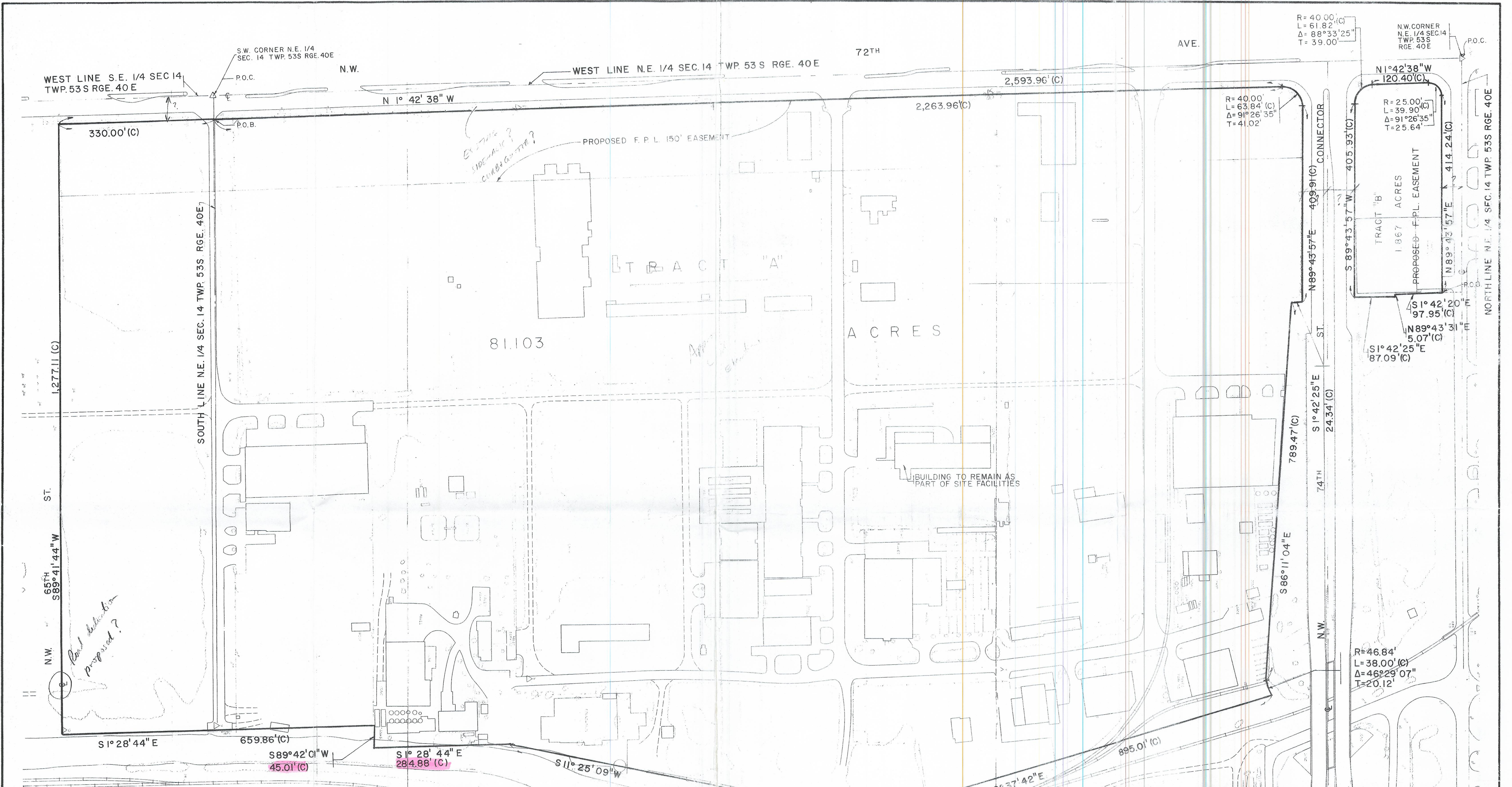


PALMETTO YARD



LOCATION MAP
SCALE: 1" = 900'



R=40.00'
L=61.82'
Δ=88°33'25"
T=39.00'

N.W. CORNER N.E. 1/4 SEC. 14 TWP. 53 S RGE. 40 E P.O.C.

WEST LINE S.E. 1/4 SEC. 14 TWP. 53 S RGE. 40 E
WEST LINE N.E. 1/4 SEC. 14 TWP. 53 S RGE. 40 E

330.00'(C)

N 1° 42' 38" W

2,263.96'(C)

2,593.96'(C)

R=40.00'
L=63.84'(C)
Δ=91°26'35"
T=41.02'

N 1° 42' 38" W
120.40'(C)

R=25.00'
L=39.90'(C)
Δ=91°26'35"
T=25.64'

PROPOSED F.P.L. 150' EASEMENT

81.103

ACRES

1277.11(C)

SOUTH LINE N.E. 1/4 SEC. 14 TWP. 53 S RGE. 40 E

ST.

655'
S 89° 41' 44" W

Hand delineation proposed?

S 1° 28' 44" E

659.86'(C)

S 89° 42' 01" W
45.01'(C)

S 1° 28' 44" E
284.88'(C)

S 11° 25' 09" W

777.71'(C)

S 16° 37' 42" E

895.01'(C)

866' 11" 04" E

789.47'(C)

S 1° 42' 25" E

24.34'(C)

ST.

N 89° 43' 57" E

409.91'(C)

CONNECTOR

R=46.84'
L=38.00'(C)
Δ=46°29'07"
T=20.12'

S 1° 42' 20" E
97.95'(C)
N 89° 43' 31" E
5.07'(C)
S 1° 42' 25" E
87.09'(C)

NORTH LINE N.E. 1/4 SEC. 14 TWP. 53 S RGE. 40 E

SURVEYOR'S NOTES:
1. ALL EXISTING STRUCTURES WITHIN THE SITE ARE TO BE DEMOLISHED OR REMOVED, EXCEPT AS SHOWN.
2. ALL EXISTING UTILITIES ARE TO BE ABANDONED, REMOVED OR RELOCATED.
3. ALL EXISTING EASEMENTS WILL BE ABANDONED

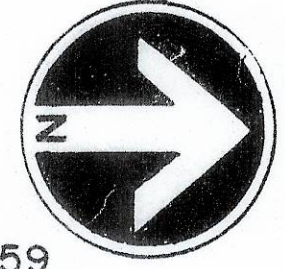
OWNER OF RECORD
METROPOLITAN DADE COUNTY.

SURVEYOR
KAISER TRANSIT GROUP
44 WEST FLAGLER
MIAMI, FLORIDA 33130

DESCRIPTION
PORTIONS OF THE NE 1/4 AND SE 1/4 OF SEC. 14, TWP. 53 S, RGE. 40 E.

SURVEYOR'S CERTIFICATE
I HEREBY CERTIFY THAT THIS TENTATIVE PLAT HAS BEEN PREPARED UNDER MY SUPERVISION AND IS TRUE AND CORRECT TO THE BEST OF MY KNOWLEDGE AND BELIEF.

HENRY R. KINGSBURY
PROFESSIONAL LAND SURVEYOR No. 2159
STATE OF FLORIDA



DESIGNED	DATE				
MARINO PEOLI	12-8-80				
DRAWN	DATE				
CHECKED	DATE				
APPROVED	DATE	NO.	DATE	BY	APPROVED
		CHK.		CHK.	REVISIONS

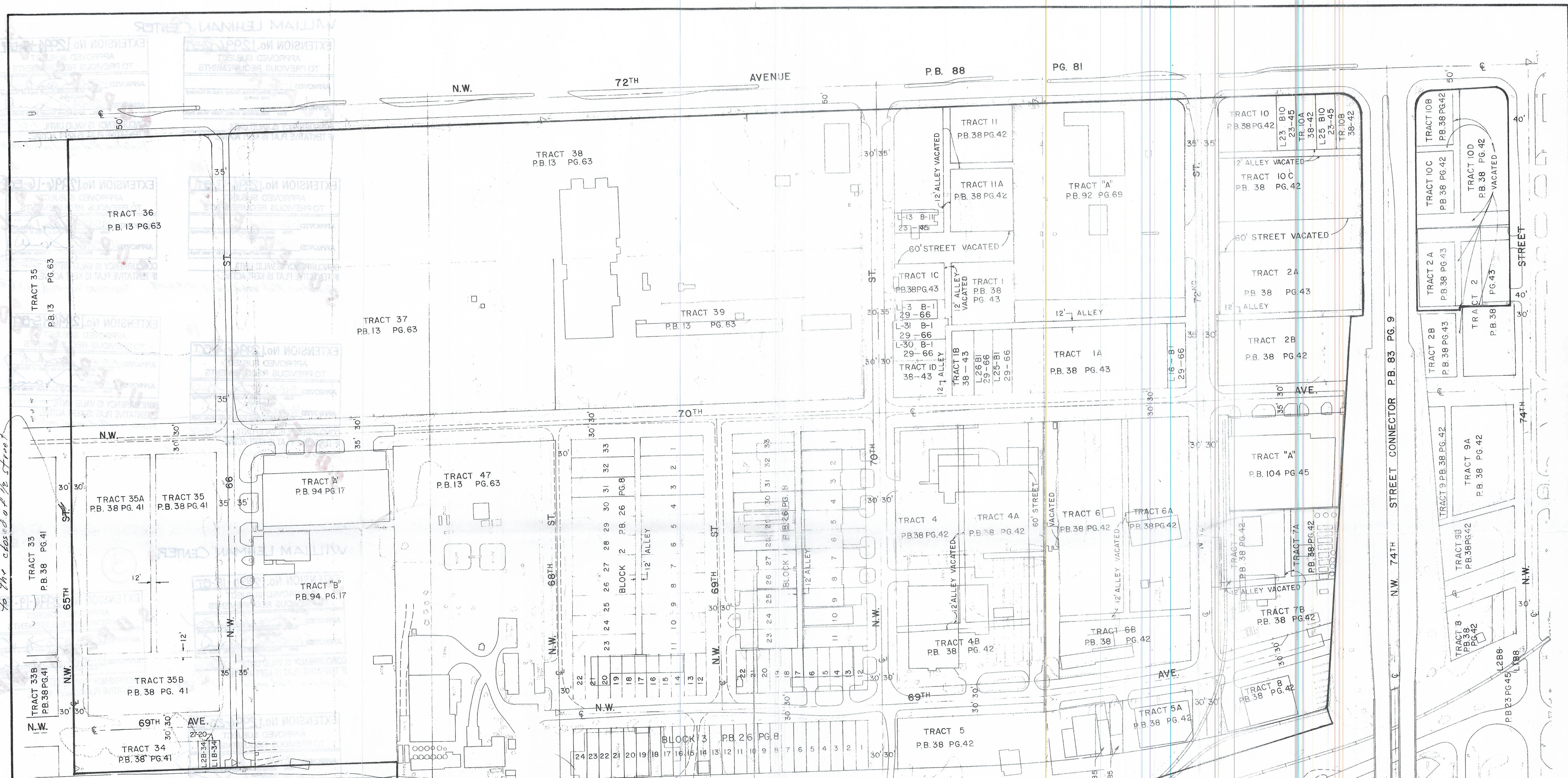
Dade County Transportation Improvement Program

METROPOLITAN DADE COUNTY OFFICE OF TRANSPORTATION ADMINISTRATION	THE KAISER TRANSIT GROUP a joint venture KAISER ENGINEERS DIVISION OF HENRY J. KAISER COMPANY HARRY WEESE & ASSOCIATES LTD. POST, BUCKLEY, SCHUH & JERNIGAN, INC. CARR SMITH AND ASSOCIATES, INC. SCHIMPELPER, CORRADINO ASSOCIATES
APPROVED	DATE

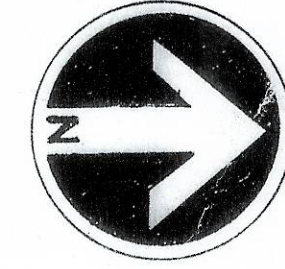
PALMETTO YARD
TENTATIVE PLAT
EXISTING SITE CONDITIONS

SCALE 1"=100'
DRAWING SKR-293

F.P.C. to consent to the closing of 1/2 street



PLAT BOOK	PAGE	SUBDIVISION NAME
13	63	AMENDED PLAT OF E 1/2 OF SEC. 14, TWP. 53S RGE. 40E
23	45	SECTION ONE OF FIRST ADDITION TO JUNCTION CITY
26	8	JUNCTION CITY
27	20	SECTION TWO OF FIRST ADDITION TO JUNCTION CITY
29	66	SECOND ADDITION TO JUNCTION CITY
38	41	REVISED PLAT OF SECTION TWO OF FIRST ADDITION JUNCTION CITY
38	42	REVISED PLAT OF SECTION ONE OF FIRST ADDITION JUNCTION CITY
38	43	REVISED PLAT OF SECOND ADDITION TO JUNCTION CITY
92	69	CAROLINE MILAM TRACT
94	17	JUNCTION SITES
104	45	MOON SUBDIVISION



DESIGNED	DATE				
M. PEOLI	12-2-80				
DRAWN	DATE				
CHECKED	DATE				
	12-10-80				
APPROVED	DATE	NO.	DATE	BY	REVISIONS
				CHK	

Dade County Transportation Improvement Program

METROPOLITAN DADE COUNTY OFFICE OF TRANSPORTATION ADMINISTRATION

THE KAISER TRANSIT GROUP a joint venture

KAISER ENGINEERS
DIVISION OF HENRY J. KAISER COMPANY
HARRY WESE & ASSOCIATES LTD.

POST, BUCKLEY, SCHUH & JERNIGAN, INC.
CARR SMITH AND ASSOCIATES, INC.
SCHIMPELER-CORRADINO ASSOCIATES

PALMETTO YARD TENTATIVE PLAT

EXISTING SUBDIVISIONS

SCALE: 1" = 100'

DRAWING: SKR-294