

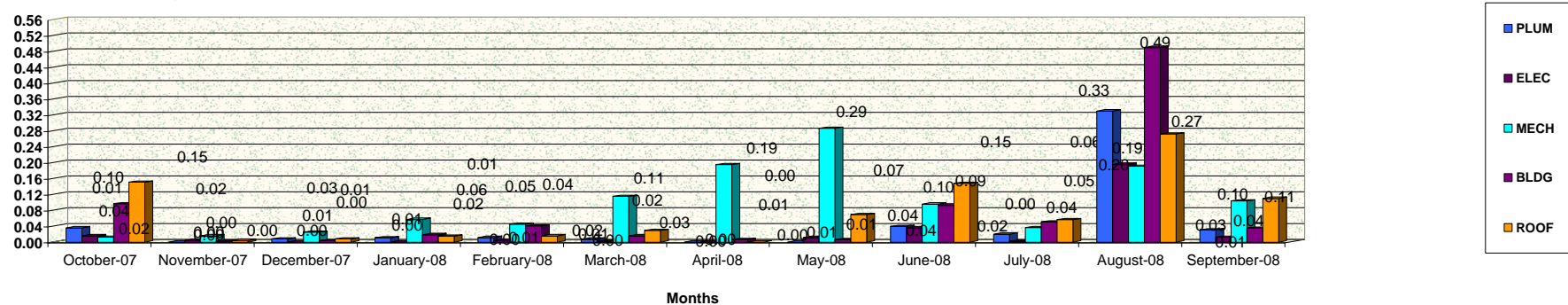
**BUILDING DEPARTMENT
Business Plan
FISCAL YEAR 2007-2008
Average Carry Overs Per Trade**

Oct-07					Nov-07					Dec-07					Jan-08				
TRADES	# of Inspectors	# of Carry Over	# of Working Days in the Month	Average Carry Over Per Day	TRADES	# of Inspectors	# of Carry Over	# of Working Days in the Month	Average Carry Over Per Day	TRADES	# of Inspectors	# of Carry Over	# of Working Days in the Month	Average Carry Over Per Day	TRADES	# of Inspectors	# of Carry Over	# of Working Days in the Month	Average Carry Over Per Day
PLUM	14	11	22	0.04	PLUM	13	0	19	0.00	PLUM	13	2	20	0.01	PLUM	13	3	21	0.01
ELEC	23	8	22	0.02	ELEC	24	2	19	0.00	ELEC	24	0	20	0.00	ELEC	24	0	21	0.00
MECH	11	3	22	0.01	MECH	10	3	19	0.02	MECH	10	5	20	0.03	MECH	10	12	21	0.06
BLDG	28	59	22	0.10	BLDG	28	1	19	0.00	BLDG	28	2	20	0.00	BLDG	26	10	21	0.02
ROOF	13	43	22	0.15	ROOF	13	1	19	0.00	ROOF	13	2	20	0.01	ROOF	13	4	21	0.01
TOTAL	89	124	22	0.06	TOTAL	88	7	19	0.00	TOTAL	88	11	20	0.01	TOTAL	86	29	21	0.02

Feb-08					Mar-08					Apr-08					May-08				
TRADES	# of Inspectors	# of Carry Over	# of Working Days in the Month	Average Carry Over Per Day	TRADES	# of Inspectors	# of Carry Over	# of Working Days in the Month	Average Carry Over Per Day	TRADES	# of Inspectors	# of Carry Over	# of Working Days in the Month	Average Carry Over Per Day	TRADES	# of Inspectors	# of Carry Over	# of Working Days in the Month	Average Carry Over Per Day
PLUM	13	3	20	0.01	PLUM	13	2	21	0.01	PLUM	12	0	22	0.00	PLUM	11	0	21	0.00
ELEC	24	2	20	0.00	ELEC	23	1	21	0.00	ELEC	21	0	22	0.00	ELEC	21	5	21	0.01
MECH	10	9	20	0.05	MECH	10	24	21	0.11	MECH	7	30	22	0.19	MECH	7	42	21	0.29
BLDG	26	21	20	0.04	BLDG	24	8	21	0.02	BLDG	22	3	22	0.01	BLDG	22	3	21	0.01
ROOF	13	4	20	0.02	ROOF	13	8	21	0.03	ROOF	12	0	22	0.00	ROOF	11	16	21	0.07
TOTAL	86	39	20	0.02	TOTAL	83	43	21	0.02	TOTAL	74	33	22	0.02	TOTAL	72	66	21	0.04

Jun-08					Jul-08					Aug-08					Sep-08				
TRADES	# of Inspectors	# of Carry Over	# of Working Days in the Month	Average Carry Over Per Day	TRADES	# of Inspectors	# of Carry Over	# of Working Days in the Month	Average Carry Over Per Day	TRADES	# of Inspectors	# of Carry Over	# of Working Days in the Month	Average Carry Over Per Day	TRADES	# of Inspectors	# of Carry Over	# of Working Days in the Month	Average Carry Over Per Day
PLUM	11	9	21	0.04	PLUM	11	5	23	0.02	PLUM	11	76	21	0.33	PLUM	11	7	21	0.03
ELEC	20	15	21	0.04	ELEC	20	1	23	0.00	ELEC	20	82	21	0.20	ELEC	20	5	21	0.01
MECH	6	12	21	0.10	MECH	6	5	23	0.04	MECH	6	24	21	0.19	MECH	6	13	21	0.10
BLDG	19	37	21	0.09	BLDG	19	22	23	0.05	BLDG	19	195	21	0.49	BLDG	19	14	21	0.04
ROOF	11	34	21	0.15	ROOF	10	13	23	0.06	ROOF	10	57	21	0.27	ROOF	10	23	21	0.11
TOTAL	67	107	21	0.08	TOTAL	66	46	23	0.03	TOTAL	66	434	21	0.31	TOTAL	66	62	21	0.04

Average Carry Over Per Day



Cell: D11
Comment: o.o.: needs elect. Plus Sign.

Cell: D20
Comment: o.o.: needs elect. Plus Sign.

Cell: I20
Comment: o.o.: needs elect. Plus Sign.

Cell: M20
Comment: o.o.: needs elect. Plus Sign.

Cell: R20
Comment: o.o.: needs elect. Plus Sign.

Cell: D29
Comment: O.O. Needs Values from Elect. Plus Sign

Cell: I29
Comment: o.o.: needs elect. Plus Sign.