

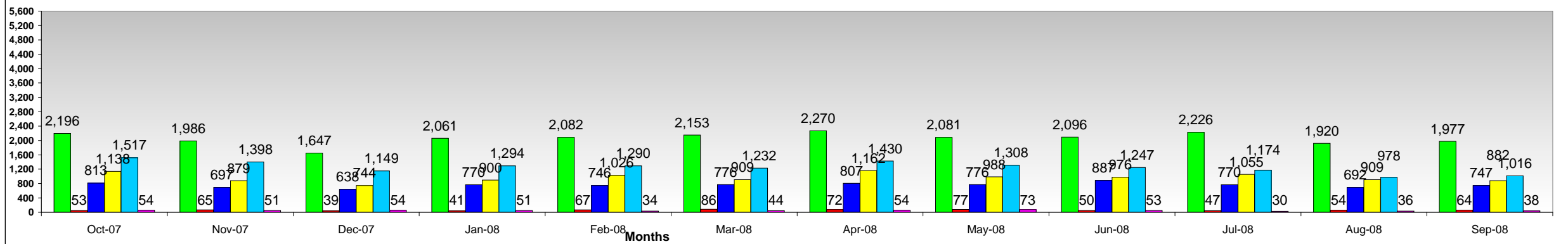
## MIAMI DADE COUNTY BUILDING DEPARTMENT

### Total Number of Applications Pulled by Trades

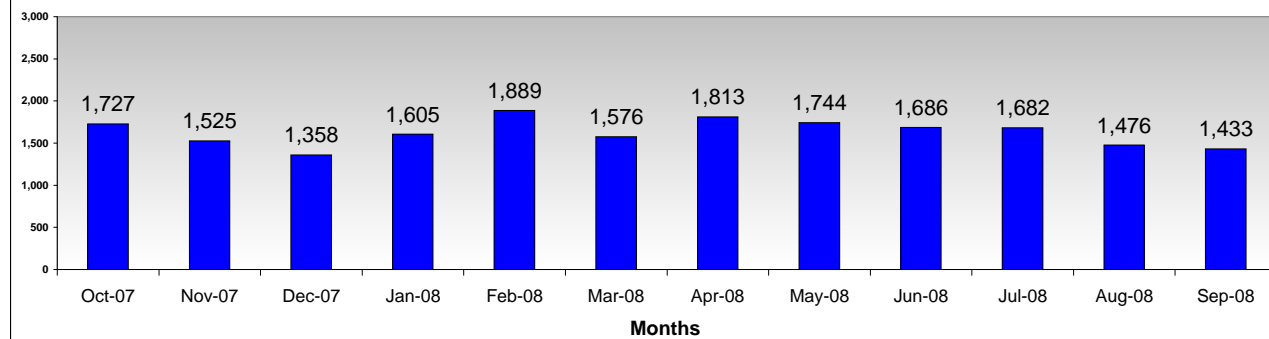
#### Fiscal Year 2007-2008

	Oct-07	Nov-07	Dec-07	Jan-08	Feb-08	Mar-08	Apr-08	May-08	Jun-08	Jul-08	Aug-08	Sep-08	Total # by FY
<b>Total Bldg 01 Applications (Commercial)</b>	808	774	590	766	838	813	778	790	806	750	699	681	9,093
<b>Total Bldg 02 Applications (Residential)</b>	1,585	1,206	1,091	1,340	1,435	1,404	1,394	1,382	1,234	1,349	1,069	1,116	15,605
<b>Total All Other Bldg Applications</b>	1,727	1,525	1,358	1,605	1,889	1,576	1,813	1,744	1,686	1,682	1,476	1,433	19,514
<b>Total Electrical Applications</b>	2,196	1,986	1,647	2,061	2,082	2,153	2,270	2,081	2,096	2,226	1,920	1,977	24,695
<b>Total Gas Applications</b>	53	65	39	41	67	86	72	77	50	47	54	64	715
<b>Total Mechanical Applications</b>	813	697	638	770	746	776	807	776	887	770	692	747	9,119
<b>Total Plumbing Applications</b>	1,138	879	744	900	1,026	909	1,162	988	976	1,055	909	882	11,568
<b>Total Roofing Applications</b>	1,517	1,398	1,149	1,294	1,290	1,232	1,430	1,308	1,247	1,174	978	1,016	15,033
<b>Total Signs</b>	54	51	54	51	34	44	54	73	53	30	36	38	572
<b>Total Number of Applications Per Month:</b>	<b>9,891</b>	<b>8,581</b>	<b>7,310</b>	<b>8,828</b>	<b>9,407</b>	<b>8,993</b>	<b>9,780</b>	<b>9,219</b>	<b>9,035</b>	<b>9,083</b>	<b>7,833</b>	<b>7,954</b>	<b>105,914</b>

#### Total Applications by Trade FY 2007-2008



#### Total All Other Bldg Applications FY 2007-2008



#### Total Applications Bldg 01 and Bldg 02 FY 2007-2008

