

**MIAMI-DADE COUNTY
BUILDING DEPARTMENT**

Business Plan

PLANS TRACKING INITIAL REVIEW - RESIDENTIAL

FY 2007-2008

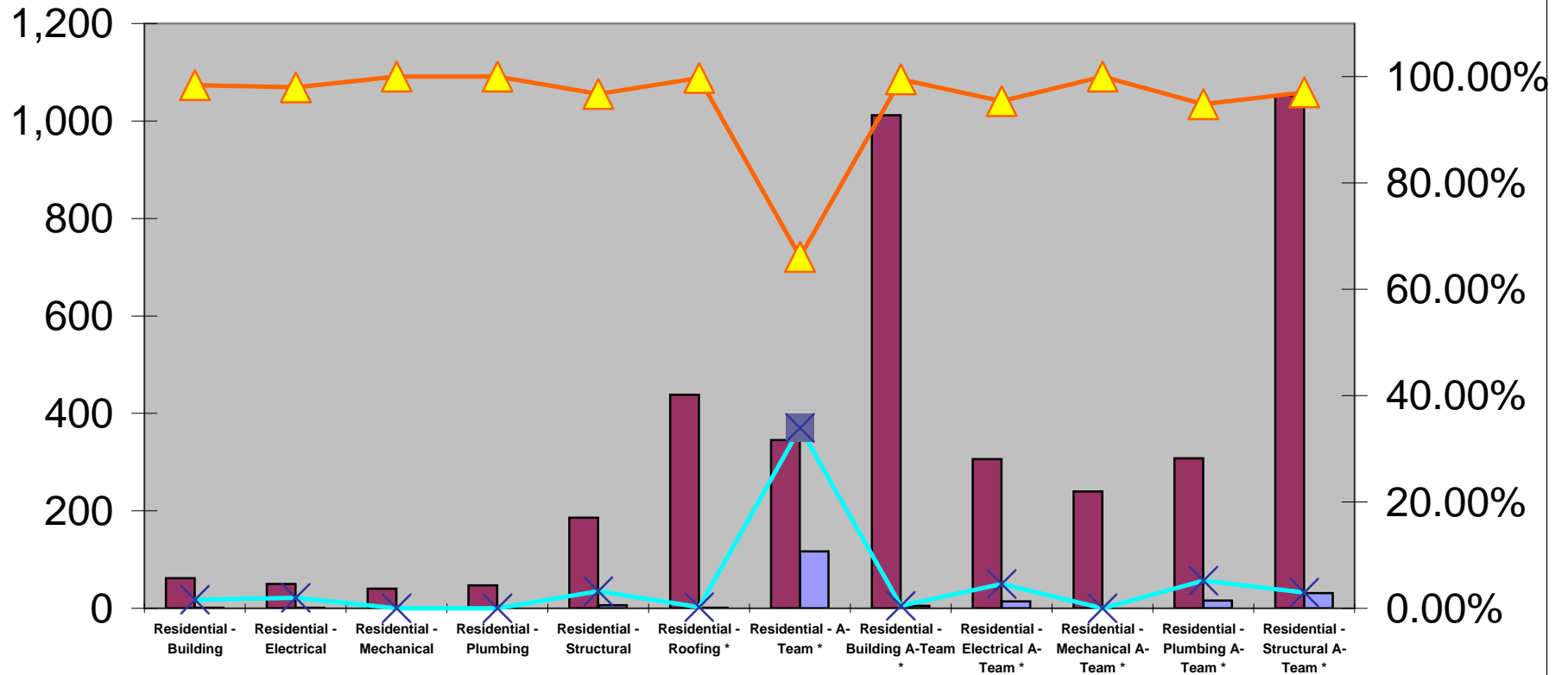
	Oct-07				Nov-07				Dec-07				Jan-08			
	Total # of Plans Reviewed	Total # of Plans Late	Percentage of Plans Completed On Time	Percentage of Plans Late	Total # of Plans Reviewed	Total # of Plans Late	Percentage of Plans Completed On Time	Percentage of Plans Late	Total # of Plans Reviewed	Total # of Plans Late	Percentage of Plans Completed On Time	Percentage of Plans Late	Total # of Plans Reviewed	Total # of Plans Late	Percentage of Plans Completed On Time	Percentage of Plans Late
Residential - Building	106	9	91.51%	8.49%	51	0	100.00%	0.00%	133	8	93.98%	6.02%	90	2	97.78%	2.22%
Residential - Electrical	95	0	100.00%	0.00%	66	0	100.00%	0.00%	120	0	100.00%	0.00%	82	0	100.00%	0.00%
Residential - Mechanical	76	0	100.00%	0.00%	55	0	100.00%	0.00%	103	0	100.00%	0.00%	60	0	100.00%	0.00%
Residential - Plumbing	78	0	100.00%	0.00%	51	0	100.00%	0.00%	108	0	100.00%	0.00%	68	0	100.00%	0.00%
Residential - Structural	608	9	98.52%	1.48%	497	5	98.99%	1.01%	587	10	98.30%	1.70%	557	7	98.74%	1.26%
Residential - Roofing *	642	3	99.53%	0.47%	548	13	97.63%	2.37%	482	3	99.38%	0.62%	492	2	99.59%	0.41%
Residential - A-Team *	1,381	506	63.36%	36.64%	1,097	427	61.08%	38.92%	1,100	490	55.45%	44.55%	1,080	295	72.69%	27.31%

	Feb-08				Mar-08				Apr-08				May-08			
	Total # of Plans Reviewed	Total # of Plans Late	Percentage of Plans Completed On Time	Percentage of Plans Late	Total # of Plans Reviewed	Total # of Plans Late	Percentage of Plans Completed On Time	Percentage of Plans Late	Total # of Plans Reviewed	Total # of Plans Late	Percentage of Plans Completed On Time	Percentage of Plans Late	Total # of Plans Reviewed	Total # of Plans Late	Percentage of Plans Completed On Time	Percentage of Plans Late
Residential - Building	87	1	98.85%	1.15%	75	2	97.33%	2.67%	93	4	95.70%	4.30%	103	6	94.17%	5.83%
Residential - Electrical	83	0	100.00%	0.00%	67	0	100.00%	0.00%	72	0	100.00%	0.00%	80	0	100.00%	0.00%
Residential - Mechanical	73	0	100.00%	0.00%	52	0	100.00%	0.00%	57	0	100.00%	0.00%	61	0	100.00%	0.00%
Residential - Plumbing	79	0	100.00%	0.00%	59	0	100.00%	0.00%	65	3	95.38%	4.62%	66	3	95.45%	4.55%
Residential - Structural	689	6	99.13%	0.87%	433	4	99.08%	0.92%	384	19	95.05%	4.95%	333	12	96.40%	3.60%
Residential - Roofing *	517	2	99.61%	0.39%	507	1	99.80%	0.20%	486	14	97.12%	2.88%	473	1	99.79%	0.21%
Residential - A-Team *	1,341	168	87.47%	12.53%	612	141	76.96%	23.04%	566	232	59.01%	40.99%	428	224	47.66%	52.34%
Residential - Building A-Team *					803	173	78.46%	21.54%	1,031	20	98.06%	1.94%	1,129	59	94.77%	5.23%
Residential - Electrical A-Team *					257	50	80.54%	19.46%	321	18	94.39%	5.61%	337	46	86.35%	13.65%
Residential - Mechanical A-Team *					211	1	99.53%	0.47%	257	0	100.00%	0.00%	253	3	98.81%	1.19%
Residential - Plumbing A-Team *					237	38	83.97%	16.03%	341	42	87.68%	12.32%	339	38	88.79%	11.21%
Residential - Structural A-Team *					742	22	97.04%	2.96%	981	131	86.65%	13.35%	1,138	460	59.58%	40.42%

	Jun-08				Jul-08				Aug-08				Sep-08			
	Total # of Plans Reviewed	Total # of Plans Late	Percentage of Plans Completed On Time	Percentage of Plans Late	Total # of Plans Reviewed	Total # of Plans Late	Percentage of Plans Completed On Time	Percentage of Plans Late	Total # of Plans Reviewed	Total # of Plans Late	Percentage of Plans Completed On Time	Percentage of Plans Late	Total # of Plans Reviewed	Total # of Plans Late	Percentage of Plans Completed On Time	Percentage of Plans Late
Residential - Building	63	11	82.54%	17.46%	70	2	97.14%	2.86%	51	1	98.04%	1.96%	62	1	98.39%	1.61%
Residential - Electrical	54	0	100.00%	0.00%	66	1	98.48%	1.52%	53	2	96.23%	3.77%	50	1	98.00%	2.00%
Residential - Mechanical	47	0	100.00%	0.00%	51	0	100.00%	0.00%	38	0	100.00%	0.00%	40	0	100.00%	0.00%
Residential - Plumbing	45	0	100.00%	0.00%	61	0	100.00%	0.00%	39	4	89.74%	10.26%	47	0	100.00%	0.00%
Residential - Structural	262	27	89.69%	10.31%	282	8	97.16%	2.84%	168	16	90.48%	9.52%	186	6	96.77%	3.23%
Residential - Roofing *	467	0	100.00%	0.00%	464	0	100.00%	0.00%	318	11	96.54%	3.46%	438	1	99.77%	0.23%
Residential - A-Team *	335	175	47.76%	52.24%	371	148	60.11%	39.89%	300	112	62.67%	37.33%	345	117	66.09%	33.91%
Residential - Building A-Team *	1,243	234	81.17%	18.83%	1,227	8	99.35%	0.65%	1,012	3	99.70%	0.30%	1,012	5	99.51%	0.49%
Residential - Electrical A-Team *	361	11	96.95%	3.05%	376	26	93.09%	6.91%	276	24	91.30%	8.70%	306	14	95.42%	4.58%
Residential - Mechanical A-Team *	263	0	100.00%	0.00%	297	1	99.66%	0.34%	210	1	99.52%	0.48%	240	0	100.00%	0.00%
Residential - Plumbing A-Team *	355	19	94.65%	5.35%	351	36	89.74%	10.26%	304	47	84.54%	15.46%	308	16	94.81%	5.19%
Residential - Structural A-Team *	1,236	498	59.71%	40.29%	1,252	114	90.89%	9.11%	1,089	68	93.76%	6.24%	1,052	31	97.05%	2.95%

* These Reviews have a department Established benchmark of 24 hours

SEPTEMBER INITIAL REVIEW RESIDENTIAL



■ Sep-08 Total # of Plans Reviewed

■ Sep-08 Total # of Plans Late

▲ Sep-08 Percentage of Plans Completed On Time

× Sep-08 Percentage of Plans Late