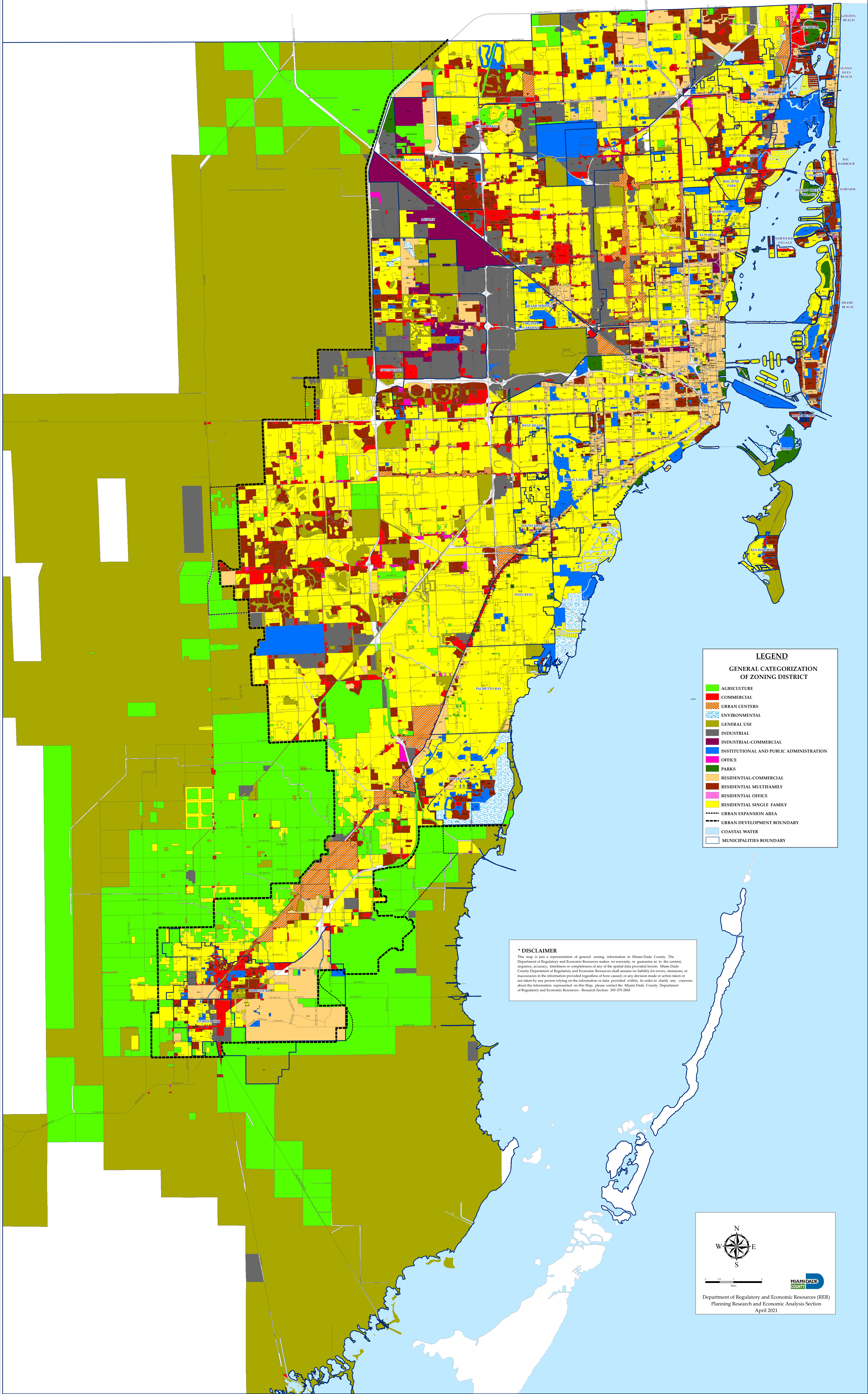


CURRENT ZONING IN MIAMI-DADE COUNTY, FLORIDA



LEGEND
GENERAL CATEGORIZATION
OF ZONING DISTRICT

- AGRICULTURE
- COMMERCIAL
- URBAN CENTERS
- ENVIRONMENTAL
- GENERAL USE
- INDUSTRIAL
- INDUSTRIAL-COMMERCIAL
- INSTITUTIONAL AND PUBLIC ADMINISTRATION
- OFFICE
- PARKS
- RESIDENTIAL-COMMERCIAL
- RESIDENTIAL MULTIFAMILY
- RESIDENTIAL OFFICE
- RESIDENTIAL SINGLE FAMILY
- URBAN EXPANSION AREA
- URBAN DEVELOPMENT BOUNDARY
- COASTAL WATER
- MUNICIPALITIES BOUNDARY

*** DISCLAIMER**
This map is just a representation of general zoning information in Miami-Dade County. The Department of Regulatory and Economic Resources makes no warranty, or guarantee as to the content, sequence, accuracy, timeliness or completeness of any of the spatial data provided herein. Miami-Dade County Department of Regulatory and Economic Resources shall assume no liability for errors, omissions, or inaccuracies in the information provided regardless of how caused; or any decision made or action taken or not taken by any person relying on the information or data provided within. In order to clarify any concerns about the information represented on this Map, please contact the Miami-Dade County Department of Regulatory and Economic Resources - Research Section: 305-375-2945

MIAMI-DADE COUNTY

Department of Regulatory and Economic Resources (RER)
Planning Research and Economic Analysis Section
April 2021